



Wireless Solutions for the Edge of IoT Innovation

The future of IoT is happening now—at the edge, in real time, and across billions of devices. From smart cities and connected homes to wearables, retail, and industrial automation, your customers demand reliable, scalable, and energy-efficient wireless connectivity.

At Skyworks, we deliver high-performance RF solutions that power the next generation of intelligent devices. Our portfolio supports multi-protocol wireless technologies—including Wi-SUN®, LoRa®, Bluetooth®, LTE-M, and 5G Massive IoT—optimized for low power, long range, and fast deployment. Whether you're building for dense urban networks, battery-powered sensors, or global platforms, we help you connect faster, smarter, and more reliably—wherever innovation happens.

IoT Applications



Connected Home

- Smart appliances
- Security cameras and locks
- Headsets and speakers
- Smart lighting and thermostats



Smart City

- 5G Massive IoT
- Smart energy metering
- Traffic sensors
- Smart parking



Smart Retail

- Smart shelves
- In-store analytics
- Mobile POS
- Inventory management



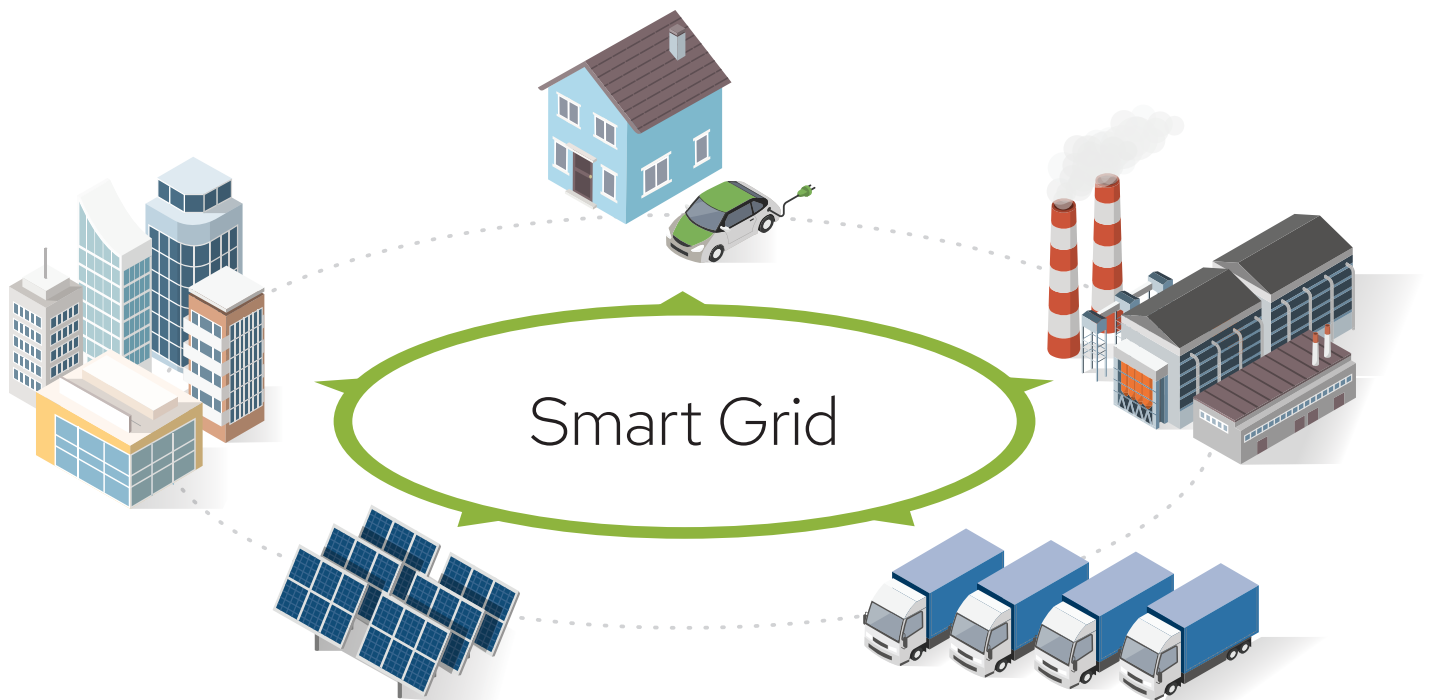
Industrial IoT

- Environmental monitoring
- Agricultural monitoring
- Robotic monitoring and control
- Asset tracking



Wearables

- Smart watches
- Hearing aids
- Fitness trackers
- Medical monitoring



Featured Products



SKY66425-11 Dual Mode LTE + ISM Front-End Module (FEM)

- Supports both LTE-M/NB-IoT and ISM bands in one compact module—ideal for customers targeting multiple regions with a single design.
- Built-in antenna switch simplifies the RF path and reduces layout loss, especially useful for small-size or battery-operated devices.



SKY66409-11 FEM for Zigbee®, Thread, and Bluetooth® Applications

- 13 dBm TX power with sub- μ s switching makes it a strong fit for dense mesh networks.
- Configurable gain and power modes allow tuning between range and battery performance.



SK66424-11 RF FEM for Wi-SUN® and LoRaWAN®

- Built-in SAW filter and limiter help protect RF integrity in noisy deployments—especially in the 922 to 928 MHz band commonly used in Japan.
- Includes power detection and harmonic suppression features to simplify regulatory compliance.



SKY66431 System-in-Package (SiP) 5G Massive IoT

- Pre-certification with major carriers and compliant with PTCRB, GCF, FCC/IC, saving months of regulatory work, cost, and accelerating time to market.
- Fully integrated with Sequans® modem and Skyworks PA, RF switch, filter, RTC, memory, and shielding—ready to prototype or go to production.



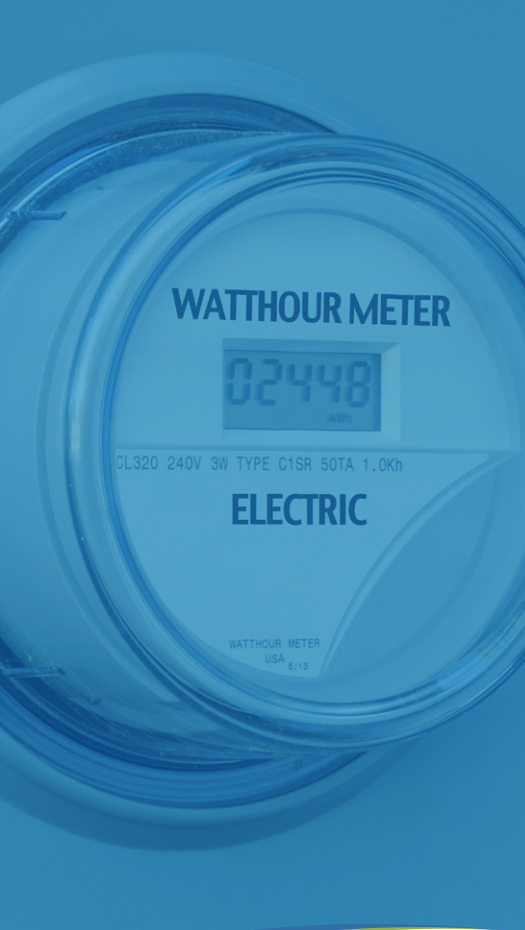
SKY66122-11 Fully Integrated FEM for Wi-SUN® Applications

- Ultra-low sleep current ($<1 \mu$ A) makes it perfect for nodes that stay idle most of the time.
- Optional receive filter boosts selectivity in crowded industrial or city environments.



SKYR23002: SKY66423-11 (FEM) + Semtech SX1261 (SoC)

- Supports Wi-SUN®, LoRa®, HaLow™, and wMBUS—ideal for customers building for different markets or regions.
- High TX power (+27 dBm) and low-noise LNA (1.5 dB NF) ensure strong link performance, even in difficult RF environments.



Copyright © 2025 Skyworks Solutions, Inc. All Rights Reserved.

Skyworks, the Skyworks logo and others are trademarks or registered trademarks of Skyworks Solutions, Inc. or its subsidiaries in the United States and other countries. Third-party brands and names are for identification purposes only and are the property of their respective owners.

Skyworks | Nasdaq: SWKS | skyworksinc.com

USA: 949.231.3000 | Asia: 886.2.2732.8956 | Europe: 33.1.4354.8540