



skyworksinc.com

Next-Generation Power Amplifier Solutions for 5G, 6G, and LTE Infrastructure

Empowering Massive MIMO Base Stations with Higher Capacity and Smarter, Stronger Signal Performance

As macro base stations and Massive MIMO antennas converge on shared towers, signal interference threatens network integrity. High-power macro outputs can overwhelm sensitive MIMO receivers, causing degraded performance or even hardware damage.

The Skyworks SKY67208-11 receive module is engineered to intelligently detect and defend against overpowering signals without compromising receiver sensitivity. Our unique self-protecting technology boosts antenna resilience, minimizes downtime, and ensures a stronger, more reliable user experience.

Meet the SKY66071-11 and SKY66072-11: Our latest high-linearity predriver amplifiers designed for peak performance across 5G and emerging 6G bands (2.3 GHz to 4.2 GHz). Their versatile architecture enables seamless integration and flexible implementation across multiple base station designs, accelerating development and reducing total cost of ownership.



SKYWORKS®

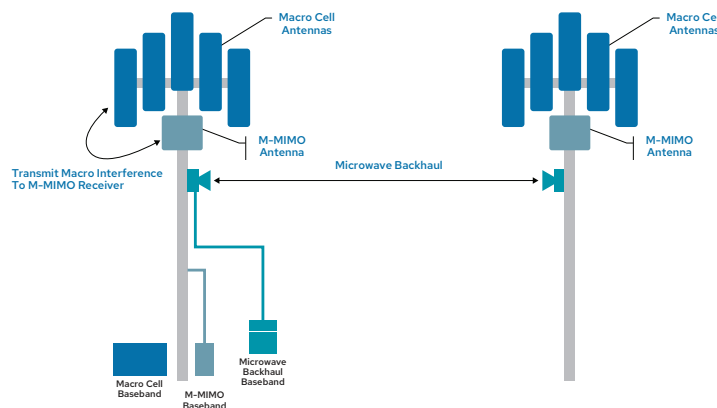
Featured Products

SKY67208-11

Wideband Dual Channel Receive Module for 5G/4G/LTE Infrastructure

Features

- **Fail-Safe Protection:** Integrated TX power sensing and switch for enhanced reliability
- **Dual Channel Efficiency:** Above 40 dB isolation enables compact design and reduced routing complexity of multiple antennas
- **Better Thermals:** Low power consumption at just 190 mW per channel reduces heat sink and product weight
- **Power Control:** 1-bit fast DSA with 6 dB step ensures up-link signal integrity in all environments
- **Simplified Design:** Internal RF match and bias circuits for plug-and-play implementation

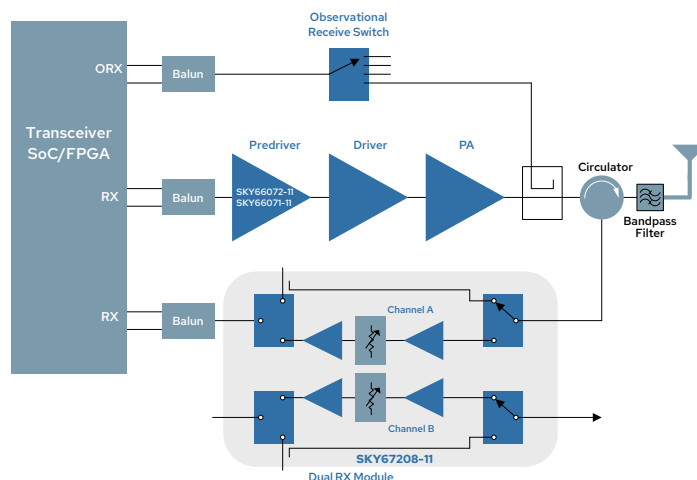


SKY66072-11/SKY66071-11

Wideband, High-Gain, Ultra-Linear Predriver Amplifiers for 5G and 4G Infrastructure Massive MIMO, Macro, and Low Power RAN

Features

- **Adaptive Gain:** Four programmable gain states for flexible deployment
- **Superior Linearity:** Maintains signal integrity across environments
- **Maximized Capacity:** Supports the industry's widest instantaneous signal bandwidth (>400 MHz)
- **I/O Impedance:** 100 Ω differential input, 50 Ω single-ended output
- **Smart Biasing:** Integrated active bias compensates for temperature variations
- **Easy Control:** 1.8 V logic supports power saving shutdown modes and agnostic chipset interface



Part Number	Description	3GPP Band	Package
SKY66071-11	2300 to 2700 MHz, 400 MHz wide instantaneous BW high-gain PA	B7, B38, B40, B41, and n41	24-pin, 4 x 4 x 0.805 mm
SKY66072-11	3100 to 4200 MHz, 600 MHz wide instantaneous BW high-gain PA	B42, B43, B48 (CBRS), n77, n78	24-pin, 4 x 4 x 0.805 mm
SKY67208-11	3300 to 4200 MHz dual wideband LNA	B42, B43, B48 (CBRS), n77, n78	32-pin, 5 x 5 x 0.76 mm

Copyright © 2025 Skyworks Solutions, Inc. All Rights Reserved.

Skyworks, the Skyworks logo and others are trademarks or registered trademarks of Skyworks Solutions, Inc. or its subsidiaries in the United States and other countries. Third-party brands and names are for identification purposes only and are the property of their respective owners.